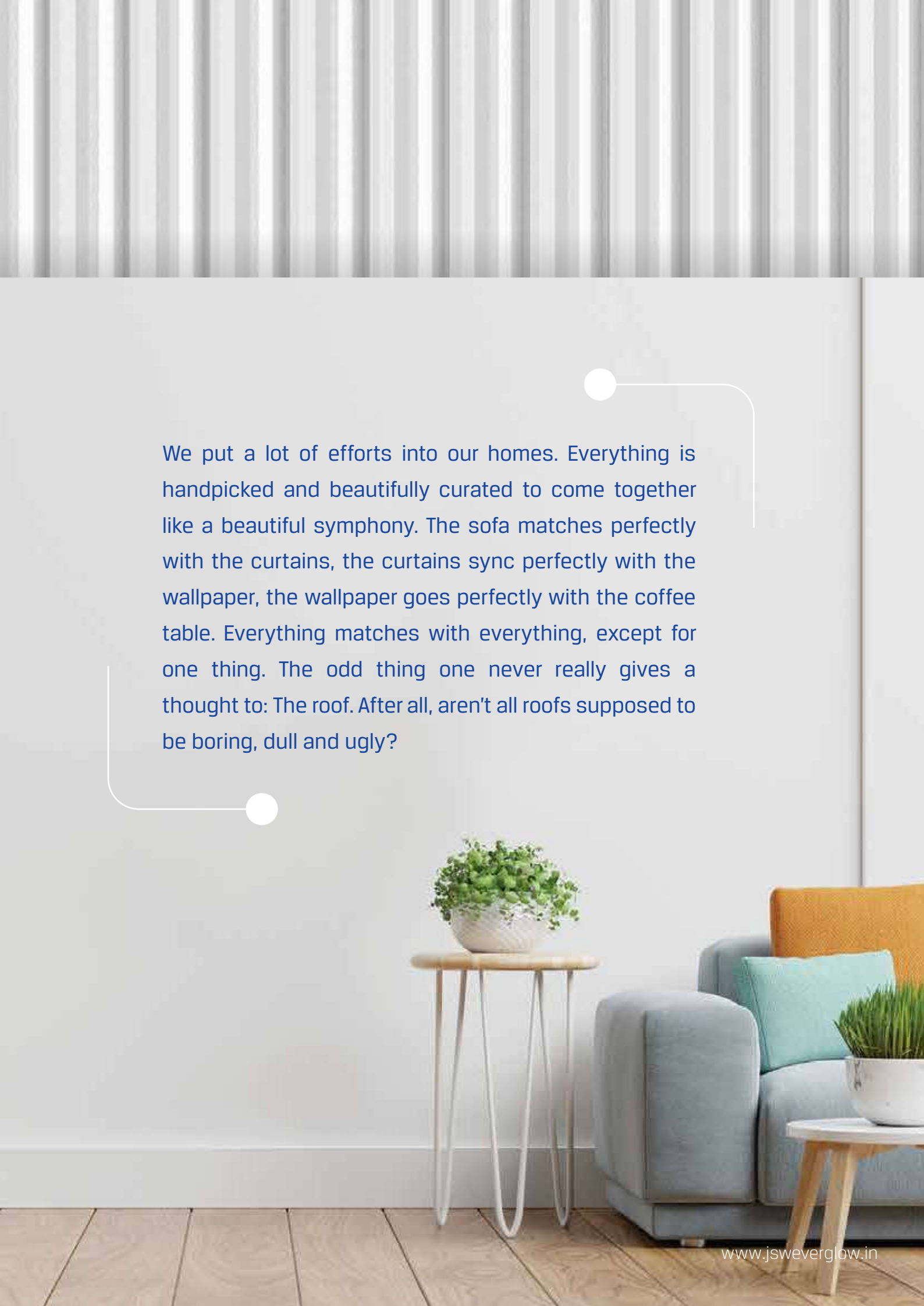


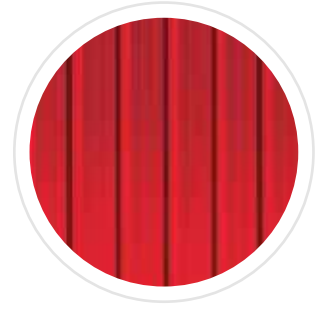
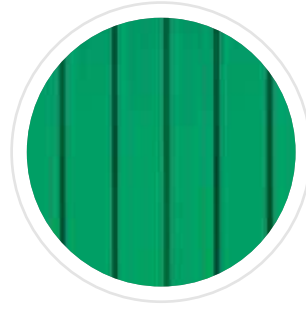
A home as colourful
as your dreams

**Beautiful Inside.
Beautiful Outside.**





We put a lot of efforts into our homes. Everything is handpicked and beautifully curated to come together like a beautiful symphony. The sofa matches perfectly with the curtains, the curtains sync perfectly with the wallpaper, the wallpaper goes perfectly with the coffee table. Everything matches with everything, except for one thing. The odd thing one never really gives a thought to: The roof. After all, aren't all roofs supposed to be boring, dull and ugly?



JSW Everglow presents premium colour-coated sheets that are beautiful inside, beautiful outside. These sheets are not only meant to make your home look beautiful from the outside but from the inside as well. How? With different colours from the outside, now you can sync the interior decor of your home to make it look elegantly vibrant with pearl white and light grey variants to colour up the interiors. These premium colour coated sheets are made with the purest form of raw materials in order to ensure the utmost quality of strength and to fill your lives with the beautiful colours of affection in your home.

But that is not all. These sheets have a superior galvalume coating and come with a 20-year warranty too. This means, your homes will remain beautiful longer than you would expect.

Equip your homes with premium colour-coated sheets, and together let's build a nation with trust, reliance and optimum quality of roofs. Ones which shades dreams of all colours.

The 8 Benefits of Everglow



20 Year Warranty

It comes with a 20-year Paint Warranty, introduced for the first time in India for colour roof category. The anti-chalk and anti-fade warranty ensures what is born beautiful, stays beautiful.



ISI Approved

JSW is committed to delivering highest quality world class products. [ISI] Reaffirms that seal of quality & trust.



Unique Colours for Outside

Everglow comes with a refreshing range of colours, so that you can indulge a bit more while building your dream home.



Special High Grade Paint

It doesn't just come with high gloss Super Durable Polyester (SDP) paint coat on top, but also with Regular Modified Polyester (RMP) paint coat on the bottom. Just like we promised, "Beautiful Outside - Beautiful Inside".



Aluminium-Zinc Galvalume Coating

JSW Steel is proud to be the first licensee of Galvalume® in India. AZ-150 Aluminium-Zinc coating offers superior corrosion-resistance, making your roof last longer even in the harshest of weather conditions.



Mark of High Quality

Every Everglow sheet undergoes stringent & comprehensive quality tests to ensure you get only the best.



Optimum Temperature Management

It has SRI Technology to stop heat radiation from penetration inside your home, thus maintaining greater thermal comfort all year around and keeping the interiors cooler.



Anti-Corrosion

Anti-Corrosion technology enabled through double layered protection of Galvalume® coat & Paint coat substantially increases the life of the roof.

Beautiful **Colours** for your Beautiful **Home**

A colour that lightens up the interior of your home, pearl white makes your home and heart look bigger, just like your dreams of a happy family. This colour not only makes your home look beautiful, but the pearl shade also gives a royal touch to your roof from inside.

Pearl white

Bottom





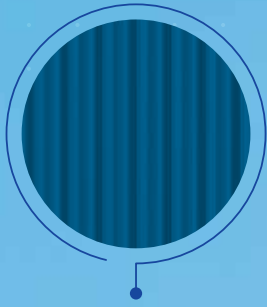
The ambient and soothing light grey interior roof gives a soothing effect and compliments the interior of your beautiful home. This light grey interior roof colour offers calmness to the environment of your home, adding to the beauty of your sophisticatedly designed abode.

OUTSIDE

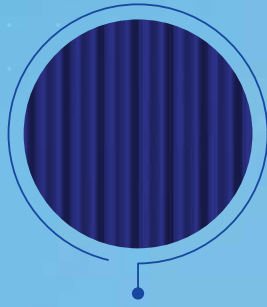
Beautiful **Colours** for your Beautiful **Home**

Vibrant, yet simply elegant. Our homes are just like our dreams where we want to fill all the colours of love and affection to fill our homes with the memories that will last forever. These exterior roofing colours from JSW Everglow do exactly the same, to make your home look beautiful even from the outside.

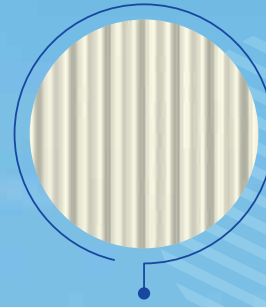




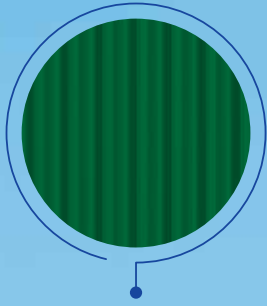
Light Blue



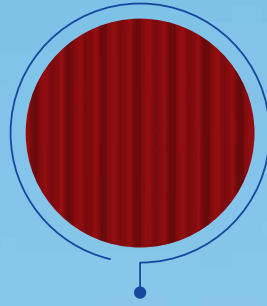
Nova Blue



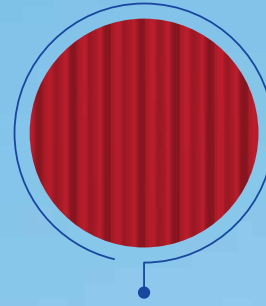
Pearl White



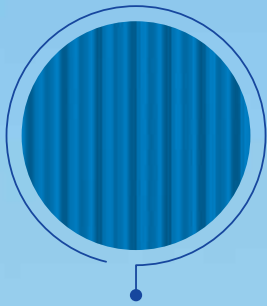
Bright Green



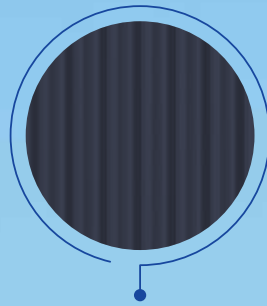
Carmine Red



Brick Red



Middle Sky Blue

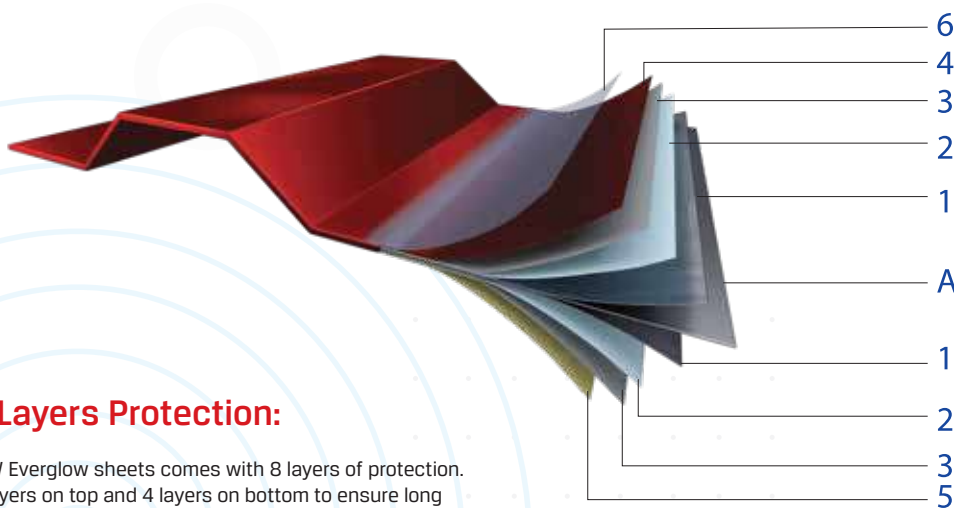


Graphite Grey



Technical Parameters

Sr.No	Parameter	PPGL HARD - Profile Sheets
1	Thickness (mm.)	0.35, 0.40, 0.45, 0.50, 0.60
2	Profile Full Width	1070mm
3	Profile Covered Width	1010mm
4	Width Tolerance	±10 mm
5	Length (ft.)	8,10,12,14,16,18, 20, 22, 24
6	Substrate	High Grade Aluminium Zinc coating
7	Paint type - Top	Super Durable Polyester (SDP)
8	Paint type - Bottom	Regular Modified Polyester (RMP)
9	Gloss	High Gloss
10	Guard film	JSW Everglow Branded Guard Film



8 Layers Protection:

JSW Everglow sheets comes with 8 layers of protection. 4 layers on top and 4 layers on bottom to ensure long life. Every layer is specially designed to give the best quality available in the country.

- A - Colled rolled steel substrate
- 1 - Al-Zinc alloy coat
- 2 - Pre-treatment (chromating)
- 3 - Primer
- 4 - Top coat
- 5 - Backer coat
- 6 - Guard film

High Performance Test

JSW Everglow goes through 11 high pressure tests to ensure highest quality standards. The quality challenge: JSW Everglow is the best colour coated sheet available in Indian market.

Sr.No. Performance Test

1	Scratch Hardness (T/B)	1.5 - 2 / 1 - 1.5 Kg
2	Impact test (in Joules) (Thickness based Soft material)	As per standard
3	Salt Spray Test (Specific to Coating Type)	1000 hrs - Pass
4	Adhesion Test (cross-hatch)	100%
5	Erichsen Cupping Test	As per Standard
6	Humidity Test	750 - 1000 hrs
7	T - Bend Test (T = substrate thickness)	No Tape Loss
8	Water boiling test	As per standard
9	Solvent Rub Test (MEK - double rub)	100DR
10	Chemical Resistance	As per standard
11	Max. Operating Temp	Upto 140 degree C

Roofing Profile

The profile has been specially designed by global experts to ensure high strength and a water-tight roofing solution to ensure leak-proof installations for years to come.

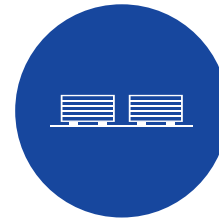


Handling & Storage

Do's



Store indoor and away from access to open areas. If left in the open, protect them with waterproof covers.



If material is not required for immediate use, stack them neatly and clear off the ground. Maintain a clear gap of 30 cm between sheet package and ground.



Store off the ground and with a minimum 50° slope (1:10) so that if rain penetrates the covering, water will drain away and not form a water pond.



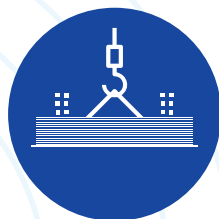
Inspect the storage site regularly to ensure that moisture has not penetrated the stock.



If stacked or bundled product becomes wet, separate it without delay, wipe it with a clean cloth and stack it to dry thoroughly.



The sheet should be kept gently to ensure that it is not damaged.



Use a spreader bar for long sheets. For small to medium size projects, without mechanical handling facilities, you can unload sheets by hand and pass them up to the roof one at a time.



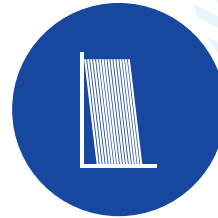
Use personal protective equipments such as clean hand gloves & closed shoes while lifting.

Handling & Storage

⊗ Dont's



Don't keep heavy material on stacked sheets to avoid damages.



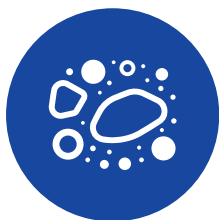
Don't place sheets vertically without proper support.



Don't use metal chain for lifting sheets.



Don't store material on walking path. Sheet moving path should be clear and no movement of people should be permitted in the path.



Don't keep sheets in direct contact with soil.



Don't let the surface get wet.



Don't slide sheets over rough surfaces or over each other. Always carry tools, don't drag them.

Installation

✓ Do's

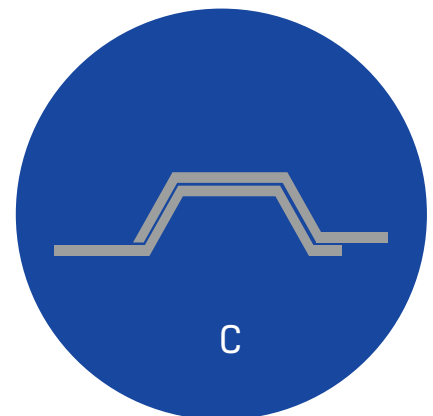
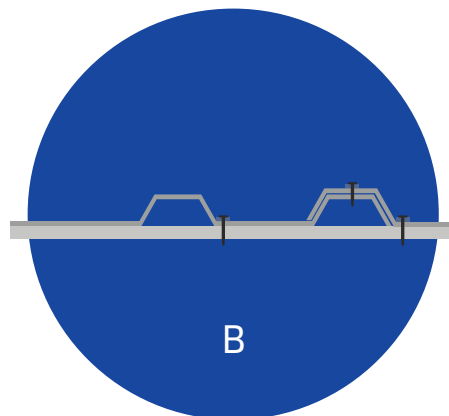
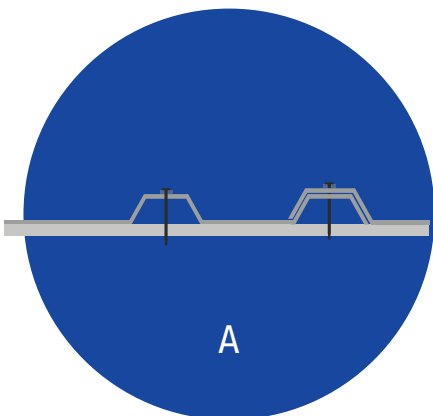
- Keep your weight evenly distributed over the soles of both feet to avoid concentrating your weight on either heels or toes
- Structure like tubes, truss, angles and channels (except Zinc coated supporting structures) should be painted before fixing the sheets
- Cut materials on the ground and not on other material where hot particles can fall and cause damage to the finish of the sheet
- Use neutral cure silicone rubber sealants
- Immediately after installation/ fixing remove the guard film of pre-painted/ coated sheets. Non-removal of guard film may cause condensation of moisture and degradation of inorganic coatings resulting in subsequent paint peel off.
- The rubber washer, component of self-drilling screws must be from materials compatible with roofing, walling and accessory material
- Remove iron fines from drilling, saw cut chips & fasteners lying can cause rust stains
- Leaving debris on the sheets may lead to such type of defects. Sweep, swarf from roof after finishing installation will lead to defects
- Direct contact with cement foundation is not recommended for bare and pre-painted Galvalume & Pre-painted Galvanized products. Accelerated corrosion can occur due to the lime contained in the cement



Installation

✓ Do's

- Crest fixing for roofs or walls - (A)
- Valley fixing for walls only - (B)
- The groove portion should be on the inner side. The air gap on the left ensures that water does not travel upwards - (C)
- The groove portion should not be on the outer side. Improper contact makes the roof vulnerable to water leakages
- Remove all metal scrap, drill particles, pop rivet mandrels and excess fasteners from the roof to avoid rust stains
- It is important that shoes do not have small stones, steel drilling etc. embedded into the soles
- Two types of dirt accumulate on buildings: dry soil and greasy or organic residues
 - The dry dirt, by itself, washes off with rain or high-pressure water spray
 - Greasy residues do not wash off in rain and hold dry soil and chalk tightly to the surface
- Water can enter through the guard film, which may lead to paint peel off



Installation

✓ Do's

- Proper fastener installation procedures to be followed
- For roll forming of pre-painted materials, rolls should be properly polished. There should not be any damage on the sheets. Clean the sheets to avoid damage to the paint finish
- Maintain the roll forming equipment to achieve proper vertical and horizontal tooling alignment, as well as adequate clearance between the mating top and bottom spindle rolls to avoid abrading the coating
- Guard film should be removed immediately after installation
- Clean the roof with clean water or mild detergent by using soft cloth, mop or soft nylon bristle brush to avoid swarf stains and rusts
- Use a power saw with a metal-cutting blade to cut thin metals. This results in fewer hot metal particles and leave less resultant burr than a carborundum disc
- Metal debris from sawing, drilling and other construction possess should be removed during installation, otherwise, the metal filings will red rust on the surface where they were deposited. Red rust of the metal filing can cause stain or discolouration on the surface of the panel whether it is bare or painted and cause appearance issue
- Guard films are provided only for forming operations and avoid handling scratches
- This water entrapment is because of the capillary actions of the gap between sheets which get entrapped in the packet while stacking/ storage



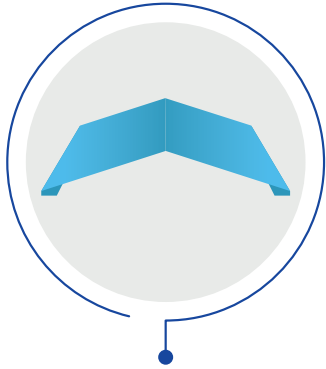
Installation

⊗ Dont's

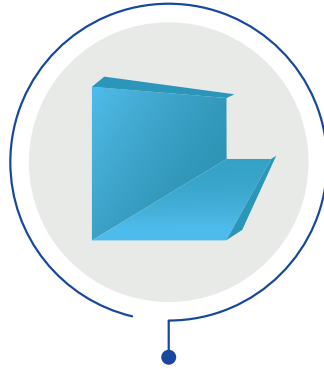
- Don't walk on single rib, sheet, end laps gutter and skylight sheets
- Don't throw bird feed on the sheet. Bird dropping can damage the colour & aesthetics of the sheets
- Do not leave debris on the sheets
- Do not allow contact with Cement
- Don't install the roof sheeting during rains, sheets get wet and slippery
- Do not allow dirt accumulation on the sheet
- Don't use stainless steel screws, J hook and carbon washer as they may damage the sheet
- The groove portion should not be on the outer side. Improper contacts make the roof vulnerable to water leakages
- Don't use acetic acid based sealants which liberate aggressive by-products during curing which is detrimental to steel sheets
- Never use abrasive or solvent type cleaners and wire brushes, steel wool, sponge scourers to clean the roof sheet as it softens the paint film
- Do not leave metal filings on the sheets



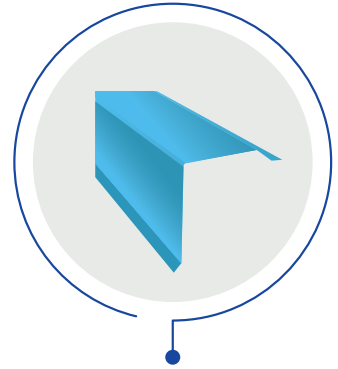
Accessories



Plain Ridge



Corner Flashing



Gable Flashing



Box Gutter



Eave Gutter



Valley Gutter



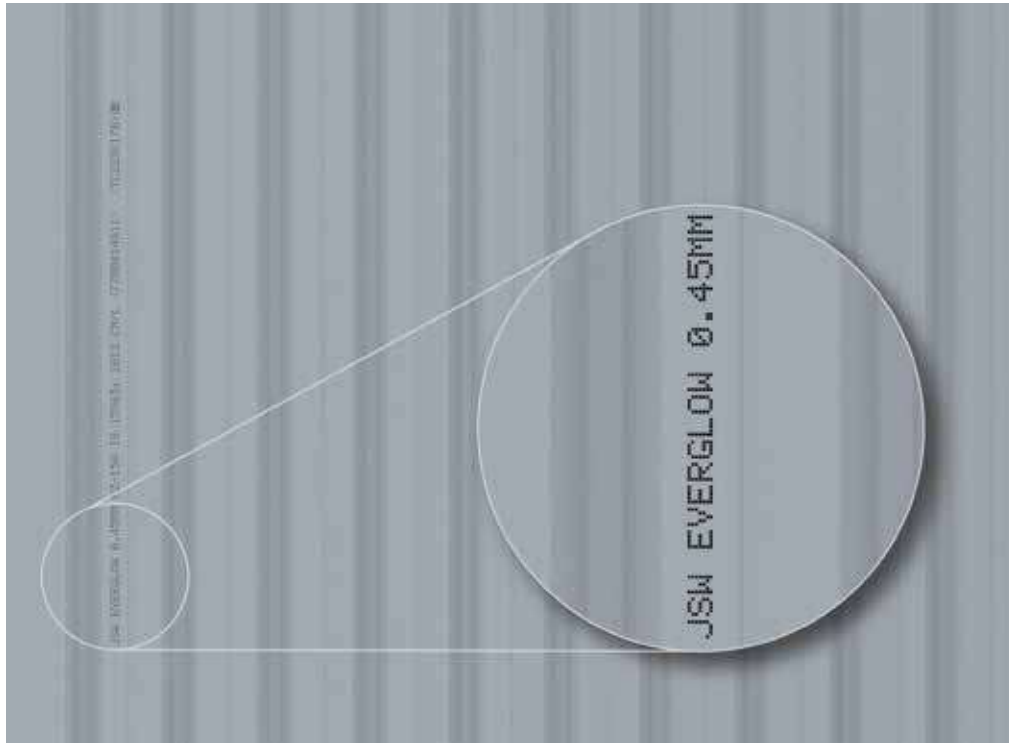
Deep Trimes



Down Take Pipe

Mark of Ingenuity

All genuine JSW Everglow sheets come with special non-erasable liner marking. The below liner markings and guard film have been created to ensure that you get the original high quality product.



Non-erasable Liner Marking Guard Film





JSW Centre, Bandra Kurla Complex,
Bandra (East), Mumbai- 400 051



Toll Free No: **1800 225 225**



www.jsweverglow.in